



INTRODUCTION

Dear members,

welcome to the 15th Architecture Sans Frontières General Assembly once again to be held online, without members meeting personally and exchanging experiences live. This year already in its usual format, including Dialogues and Workshops. Hopefully the world will find a way to deal with this pademy and the 2022 Architecture Sans Frontières General Assembly shall join members together finally again in Poland as planned for 2020.

The forced distance experienced this last months brought closer other organizations and reality's that before somehow seemed a little out of reach. In this sense this passed period became very fruitful in communicating with faraway countries and meeting organizations that otherwise would have taken longer and more resources to accomplish.

The renewed perspective of the world underlined the role of Architecture Sans Frontières and the need to reflect upon its action towards the world constant change as well as to focus on creating a wither network with other wide world organizations such as UN-Habitat or World Health Organization, creating our members opportunities to answer to a new dimension of needs.

An unprecedented number of contacts were received from all over the globe with the efforts made to increase the visibility of the organization, though the rethinking of the website, production of promotional material, media posts and the presence of ASFInt in worldwide events, juries, lectures in universities and field trips, that enlarged considerably the interest in ASFInt charter of principles related to ASFInt thematic workgroups, that attracted Individual to join ASFInt member organizations as well as groups willing to create new local ASF organizations.

Besides all constraints of the world pandemic situation, it has been possible to continue to expand and strengthen ASFInt, as well as to contribute to members capacity, permitting new projects opportunities that serve the reason of existence of the network and creating new perspectives as well as the world it self does.

As a way of recognition to the generosity of all those that came to us for whatever reason, ASFInt welcomes to its General Assembly in 2021 (as observers) all individuals in the process of creating new local ASF organizations or organizations that showed interest in joining ASFInt network, namely from Burundi, China, Cameroon, Congo, El Salvador, Equador, Lebanon, Madagascar, Syria and the United States.

Architecture Sans Frontières International is now reaching a new turning point, improving its capacity to serve local member organizations as well as to create spaces for members to intervene an help improve what all members have been building together so far.

Thank you for joining this year General Assembly and to participate in a constantly renewed vision of Architecture Sans Frontières International and consolidate the reason it was created for. See you the 25th September to help us draft the organization's future.



Beyond survival- a safe space for Rohingya women and girls by Rizvi Hassan- the winner of ASF Awards 2021



ASF AWARD 2021: WINNERS ANNOUNCED

ASF Award was launched on the 1st of March. The submissions were allowed until the 1st of May. Due to pandemic and the fact that many participants are not ASF Int Members (not going to participate in GA) the results of the competition were announced online (website, social media) on the 1st of July.

The Jury was consisted of 5 persons, active in the field of social responsible architecture, disaster response or ecological solutions in designing and building process and included: Thomas Schinkel- ASF Germany, Michele di Marco, Luis Lage, Suhasini Ayer-Guigan and Ricardo Tena. Interested can read more information about the jury in the Members email communication or on ASF Int social media.

The competition resulted in 31 entries, in comparison to 21 entries in 2019 and 49 projects submitted in 2017. All projects were considered eligible for the competition. Low frequency was presented by ASF members. Sadly, only 8 associated organisations had submitted the projects. Question arises: how big influence on the process had the pandemic. There is a rising interest of students and your architects visible.

This year's competition includes only one monetary award, sponsored by ASF Award and South of North. The 1st prize won the project: **Beyond survival- a safe space for Rohingya women and girls by Rizvi Hassan** (see the cover). Honorary mentions are: **Modskool- social design collaborative** and **Aloon Laar Shay Fa La · Come and see us Khwaia Fatmi**.

Unfortunately, due to the still difficult pandemic situation in several parts of the world the exhibition of the projects will take place only virtually, on the ASF Int website. To find out more about the winning projects, please visit:
<https://www.asfint.org/en/programs/asf-award>



honorary mentions: Modskool- social design collaborative on the left, Aloon Laar Shay Fa La · Come and see us Khwaia Fatmi on the right.



ASF DIALOGUES AND GENNERAL ASSEMBLY MEETING 2021

Dear Members, ASF International Board and all prelegents have a pleasure to invite you to the 15 th General Assembly Meeting and all connected events, including seminars, activities and discussions.

All necessary links:

To register:

https://docs.google.com/forms/d/e/1FAIpQLSd6BXi5jv24twwKWJT51EG6W-08wfkp9G6MGfH5rlc1Jq_OA/viewform

To join GA 2021 (only for members):

<https://videoconf-colibri.zoom.us/j/99153489910?pwd=SGl4cjXT01yK2t5RVF2MTNzemRiZz09#success>

To join ASF Dialogues and Challenging Practice (open to the public):

<https://videoconf-colibri.zoom.us/j/84646259148?pwd=V3pMZjlxWnFPWFJsRXMva1BUQzZmZm09>

SATURDAY 25/09

10:00-13:00*

General Assembly Meeting

ASF DIALOGUES

15:00_15:10

Social Processes Towards Building Peace- Sabine Lepere (ASF Sweden)

15:15_15:25

Ecological Houses- Juliana Bazán (ASF Peru)

15:30_15:40

Architect in Crisis- Erik Vittrup (ASF Denmark)

15:40_15:55

break

15:55_16:05

Migration- Faten Kikano

16:05_16:25

Hasselt Charter Seminar

Ligia Nunes (ASF Portugal) & Marcel Ruchon (ASF France)

16:30_18:00

Challenging Practice (activity)

SUNDAY 26/09

16:30_18:00

Challenging Practice (activity)



ASF-UK AND CHALLENGING PRACTICE

ASF-UK has been part of the Challenging Practice programme since its inception in 2012. Challenging Practice is an independent-learning programme that seeks to enable built environment professionals to engage reflexively with the challenges of community and international development.

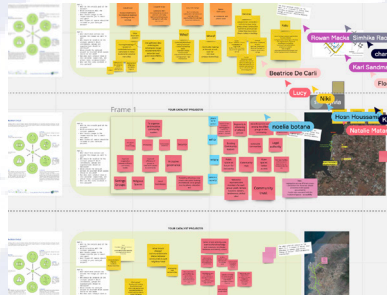
The programme consists of 3 stages with Stage A including preparatory readings and a seminar; Stage B comprising of either a practical internship or the attendance in a live workshop with an ASF partner organisation; and Stage C being the reflective part of the learning process with a focus on an essay developed with the support of recommended tutors. In the UK, Challenging Practice is accredited by RIBA CPD Core Curriculum Programme.

Since 2012 ASF-UK has organised approximately 15 Stage A seminars, provided opportunities for Stage B completion through international workshops in the UK, Ecuador, Colombia, Nepal, South Africa and Sierra Leone, and awarded over 350 certificates of completion. ASF-UK also organised other Challenging Practice related events such as training-the-trainers sessions at ASF-International's GA Meetings, and activities promoting the programme at various UK universities and architecture festivals.

Recently, ASF-UK has been leading on revision of Challenging Practice modules which will be launched in July 2021, and has developed a new Stage A Online seminar with the next one being held in October 2021.



Stage A seminar in Marseille, France 2019



Stage A online seminar 2021



Stage B workshop in Freetown, Sierra Leone 2019

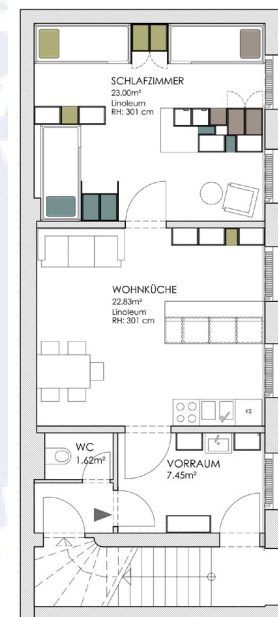


HAUS AMADOU, ASF Austria

Haus Amadou is a residential home run by Caritas Wien, a charity organisation, and is located in the 15th district in Vienna. It offers free accommodation to homeless migrants and asylum seekers. The inhabitants live in shared apartments and receive assistance and counselling. Haus Amadou is placed in a one century old building that is in desperate need of renovation. The goal of our project was to improve the living conditions of residents and create a more enjoyable living environment.

The first step was to remodel a shared flat for 6 male inhabitants. The aim of our design was to introduce more privacy for each inhabitant and create a place where they can withdraw to and feel at home. The flat consisted of 3 sparsely furnished rooms. We upgraded the flat by renewing the surfaces and by building new furniture to reorganize the rooms.

The floor was restored in the whole flat and the walls were painted according to a colour concept. The kitchen was functionally remodelled, newly tiled, and complemented with a new bar area that allows for communal cooking and relaxing. Newly installed furniture structures the rather small bedroom into private areas and serves both as room divider and storage area.



Name of Client: Caritas Wien – Haus Amadou
Total Costs: Actual costs = €5 148.- (calculated costs = €17 177.-)
Main Sources of Funding: Donations (money, labour and material)
Project Start Date: November 2017
Project End Date: June 2017



ASF-FRANCE AND CHALLENGING PRACTICE

The beginning of CP training in France : Challenging Practices learning programme (CP training) has developed in France thanks to regular Stage A seminars, approximately once a year, each time in a different delegation of the national network, since the first seminar in January 2014 in Paris, which partly took place in the building “La Passerelle”. This approach allowed the association to present its actions at the same time as it transmitted the principles that guided them.

How did the training evolved within the last 10 years? The regularity of the seminars has made it possible to structure a method of learning and transmission, now acquired by the members of the association who run the seminars. For many participants, this training is an opportunity to meet the association, discover its projects and action strategies to finally decide whether they will want to get involved with ASF.

What limitations did we encounter and why? Self-analysis of the journey. Although Stage A of CP training is held regularly every year, Stage B was never conducted with ASF France. Therefore, we referred the participants interested to the other CP members of the international network.

Here are several reasons why Stage B hasn't been developed within the French delegation:

- This stage is less supervised than the seminar, so it would be necessary to rethink the entire framework of the project;
- We do not know enough about the experience of other countries in this area to draw inspiration from it;
- We only operate thanks to volunteer members, so we would not have the human resources to set up this project without partnerships;
- In recent years, ASF France projects have invested much more in the national territory than before, and foreign projects are often monitored from afar, which gives us fewer concrete case studies to integrate into the training.

What are the prospects for the near and distant future? Thereafter, we are discussing the development of the CP

training Stage B, and we ponder upon its evolution within a more local context. We believe that it could be the way to create a bridge between ASF France's trainings and its operational projects, which often appear disconnected. We are therefore thinking about new partnerships to forge in this direction, perhaps with the academic world.

Stage B seminars could be organized jointly with other ASF delegations because a significant upstream organization and commitment in the field is required, which risks being too restrictive for volunteers.

Future seminars could be built more on the idea of „learning together“, „learning by doing“, since we cannot pretend to have a lot of previous experience.



Stage A seminar in Bordeaux, France 2018



Stage A seminar in Paris, France 2016



Stage A seminar in Paris, France 2019



SECONDARY SCHOOL GIRLS' HOSTELS IN IRINGA REGION, TANZANIA, UKUMBI

Girls' education has proven to be one of the most effective ways of poverty reduction and community development. Through education, girls acquire the capacity for better livelihoods, and learn how to look after themselves and their future families.

In rural Tanzania, however, going to school may be a challenge: some girls have to walk up to 30 km to reach their school. The daily journey can also get dangerous, with serious consequences: pregnancy is considered a valid reason for expelling a girl from school – which terminates her education.

To keep the girls safe and save time for their studies, parents and communities often prefer them to stay close to the school. For this purpose, safe and well-designed hostels for girls are needed, to provide them with an environment that supports their education and development.

Ukumbi NGO and Hollmén Reuter Sandman Architects have worked together with Lyra in Africa, to design and build hostels for girls in secondary schools in Iringa region, Tanzania. The first executed hostel opened in October 2018 in Nyang'oro Secondary School. Lyra in Africa is providing the funding for the construction of the hostel facilities, whereas Hollmén Reuter Sandman are providing the architectural design.

Sustainable, environmentally and culturally appropriate architecture is vitally important for the success of the Lyra's hostel project, and it will set a standard in the future projects in the area. It will also have a strong impact on the community by allowing them to engage in the design and construction of the hostel, thus strengthening their economy, social status and vitality. The next dormitory, with a revised and improved design is being built in Ilambilole, Iringa rural, to be opened in 2020.





Foyer Espérance, ASF France and Architekten über Grenzen for a pilot-project.

The project aims to welcome orphans and vulnerable children ensuring their access to a healthy shelter, education, food, water and health care. The project began in 2008 following Father Willy Okey's and Sister Françoise's will. They witnessed the difficulties that the orphans went across and the multiple abandons carried out mostly at Kinshasa's outskirts.

The project was based in a 20 hectares field near to the Badara III district in N'Sele, close to the international airport of Ndjili. The structure's activity, begun in 2010, has welcomed till this day more than a hundred of children. Some of them have been reunited with their family members or welcomed by host families during the scholar period. Although the children are designated by statal services, the structure runs thanks to the personal efforts of their founders.

Today, the shelter is composed of 4 main buildings : A first one that welcomes around 60 children, a second one designated for a Primary School (170 children maximum), a third one as a nursery and first aid location and the last one, before used as an office, but today reconditioned.

Moreover, the shelter runs today thanks to the help of Sister Françoise's team whose intervention has ensured a roof and an access to education for the children of Foyer Espérance as well as those living around the area.

In 2017, ASF France led a mission on the site in order to meet local actors and do a diagnostic to highlight the mains needs, perspectives and project's priorities. ASF Germany - being constantly involved in the DR-Congo since 2007 in the field of providing poor rural population with safe drinking water services (hand-drilled wells with rope pumps, vocational school for well-driller in 2016 in Kikwit) – happened to get informed about ASF-France's Espérance Shelter project activities in 2018.

Both organisations then made use of the GA in Marseille in the same year to come together in order to discuss fields of meaningful collaboration, exchange of knowledge and a commun interest in mutual project assistance.

In 2019 ASF Germany paid a first visit to the Foyer Espérance to have a closer look at the place, the local partner and to examine the soil conditions for preparing 3 well drilling locations. In late February 2020 the place was visited again in order to prove the progress of the well drilling activities and to have a commun meeting with the local partner (Père Willy, Soeur Françoise) and a representative of the german embassy who was interested in funding the refurbishment of the nursery under the conditions of a microprojet. The current situation (then severely harmed by Corona-impacts) was updated by ASF Germany in 2020.

Indeed, the experience and knowledges of the two associations, ASF France and ASF Germany, made a great cocktail which allowed to accomplish the first project's phases.

A Pilot Project: The Nursery: The current nursery will be transformed into the second dormitory building in order to provide a solution to separate the teenagers by gender. Meanwhile, the office building is being transformed today as the new nursery.

The goal, with this first project, is not only to equip the building with a consultation room and all the required material to provide first aid services for the shelter, but also to transform the place in a local solution for injured or sick children in the area. The building will be composed of one reception room, one consultation room and two rest rooms (with two beds on each one).

Today, thanks to a successful partnership between ASF Germany and ASF France, some funds have been unlocked and the work is underway. It's a big joy to see the first part of the project taking shape!



The Nursery, building before works ??



One of 3 hand-drilled wells with rope pump for the children and the neighbourhood population

